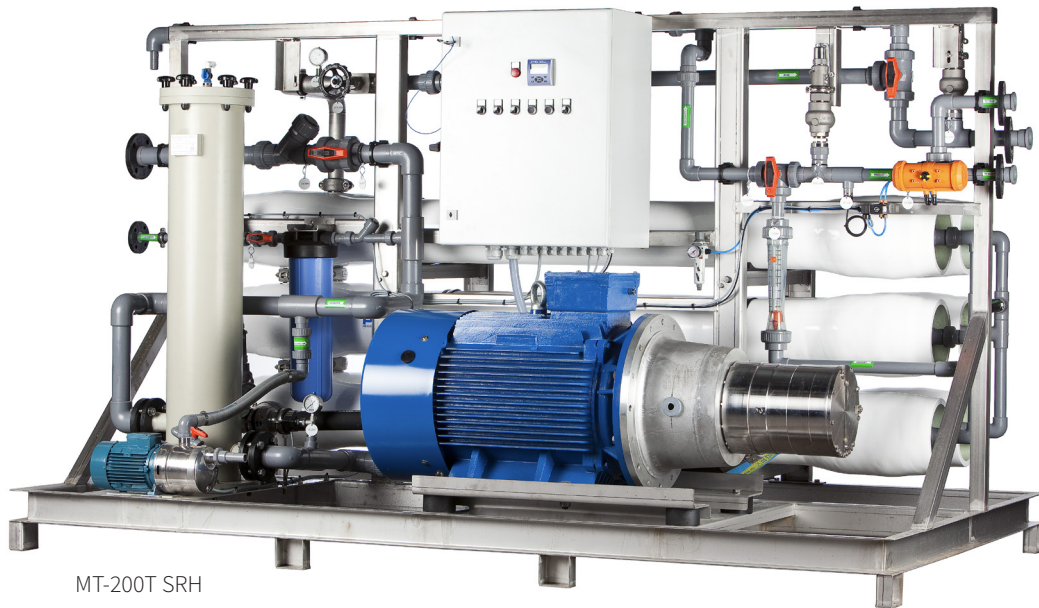


# Watermakers

MT-75, 100, 150 and 200 m<sup>3</sup>/24h



MT-200T SRH

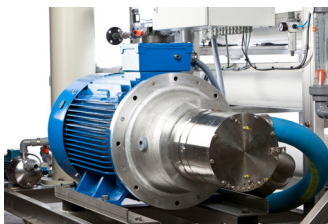
Watermaker produces drinking water from sea water based upon the reverse osmosis membrane technique. The capacities are 75, 100, 150 or 200 m<sup>3</sup>/24h from seawater (25° C).

The quality of the drinking water is continuously monitored by a salinity meter.

The design is ideal for simple service and maintenance.

#### The unit is suitable for:

- Drilling platforms
- Offshore rigs and accommodation platforms
- Commercial vessels
- Military vessels
- Resorts, hotels and communities
- Golf courses
- Livestock carrier



## Standard

- High pressure plunger pump
- Continuous control of the outgoing water quality, via a salinity meter and a dumping valve
- Automatic flush after each stop, via a carbon cartridge filter (neutralizing the chlorine)
- Low pressure switch before the high pressure pump
- Feed water particle filter (5 micron)
- Feed water pressure gauge
- Safety valves
- Flow meter for production flow
- All electrical equipment minimum IP54
- Low pressure switch on the suction side of the high pressure pump
- Level switch in water tank can be connected for start and stop

## Optional Equipment

- CIP cleaning tank
- Remote control
- Re-hardening filter in stainless steel, to increase pH
- UV sterilizer
- Dosing equipment for chlorine, anti-scalant or chlorine removal
- Prefiltration sand filters
- Spare parts and consumables package
- Portable conductivity meter and pH meter



Sandfilter SA-1000  
Thermoplastic coated vessel  
Automatic back flushing



Re-hardening filter NM-310 RO  
Stainless steel, AISI 316L  
Manual back flushing

	MT-75 T	MT-100 T	MT-150 T	MT-200 T
Capacity (m <sup>3</sup> /day)	75	100	150	200
Installed power HP (kW) (50 / 60Hz)	30	30	45	45
Installed power feed pump (kW) (50 / 60Hz)	2.2 - 4	2.2 - 4	2.2 - 4	2.2 - 4
Raw water flow (m <sup>3</sup> /h)	10.2	10.2	20.8	20.8
Membranes (8")	4 pcs	6 pcs	8 pcs	12 pcs
Width (mm)	3267	3269	3206	3206
Depth (mm)	1080	1080	1730	1730
Height (mm)	1696	1696	1786	1786
Weight dry (kg)	700	900	1200	1550
Weight (operational) wet (kg)	875	1156	1540	2056

The capacity is calculated with a sea water temperature at 25°C and a TDS at 35 500ppm.  
The treated and produced water flow will decrease with lower temperature.

### Enwa Water Technology

Importgatan 21  
SE-422 46 Hisings Backa, Sweden  
Phone: + 46 31 742 92 50  
E-mail: mar-off@enwa.com

Nordre Kullerød 9 Postboks 1241  
NO-3205 Sandefjord, Norway  
Phone: + 47 33 48 80 60

Engine Block, The Sidings, Merrylees Industrial Estate  
Leicestershire, LE9 9FE, United Kingdom  
Phone: + 44 1530 830 354